

ROBERTS FIELD - REDMOND MUNICIPAL AIRPORT (RDM)

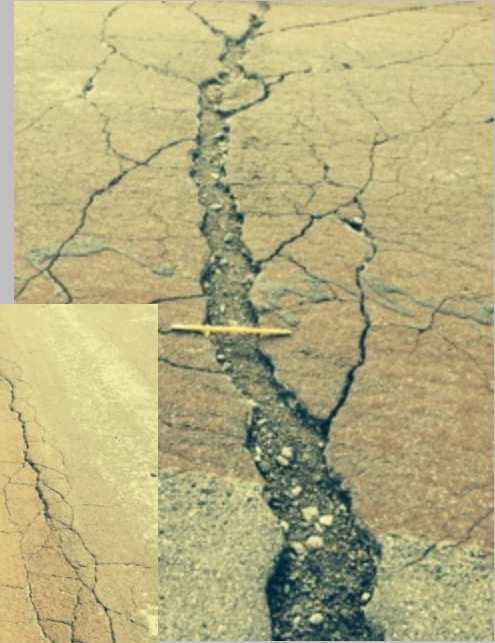


Connect Oregon VI

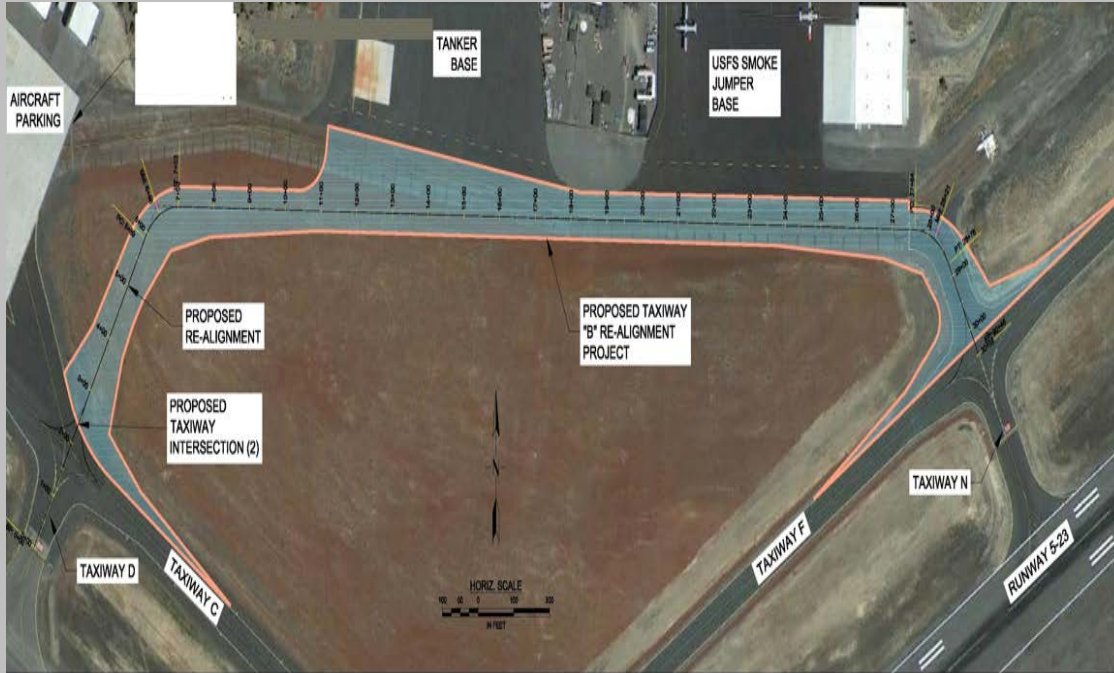


TAXIWAY B (Current)

- Built in 1943
- As of 2003 – PCI rating of 0
- Deemed unsafe
- Provides aircraft access to the U.S. Forest Service fire fighting facilities at the Airport



Taxiway B Project

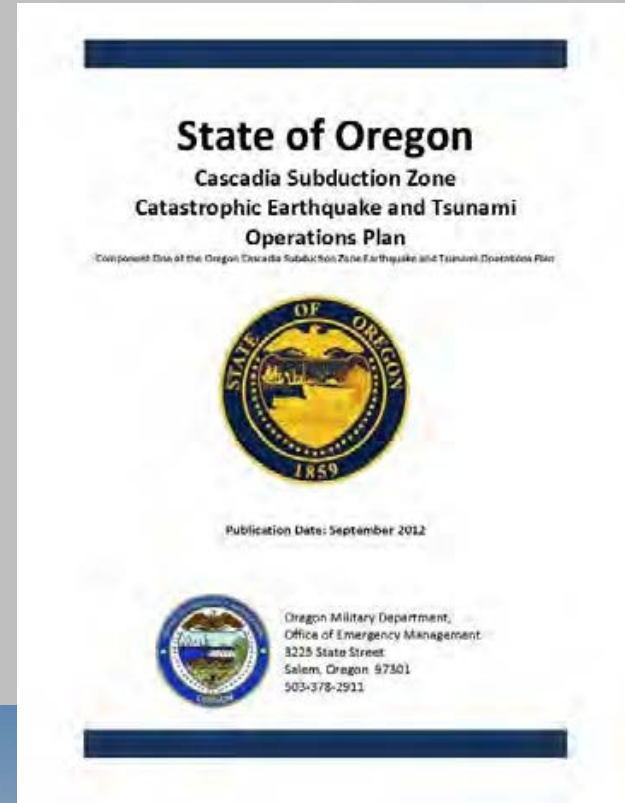


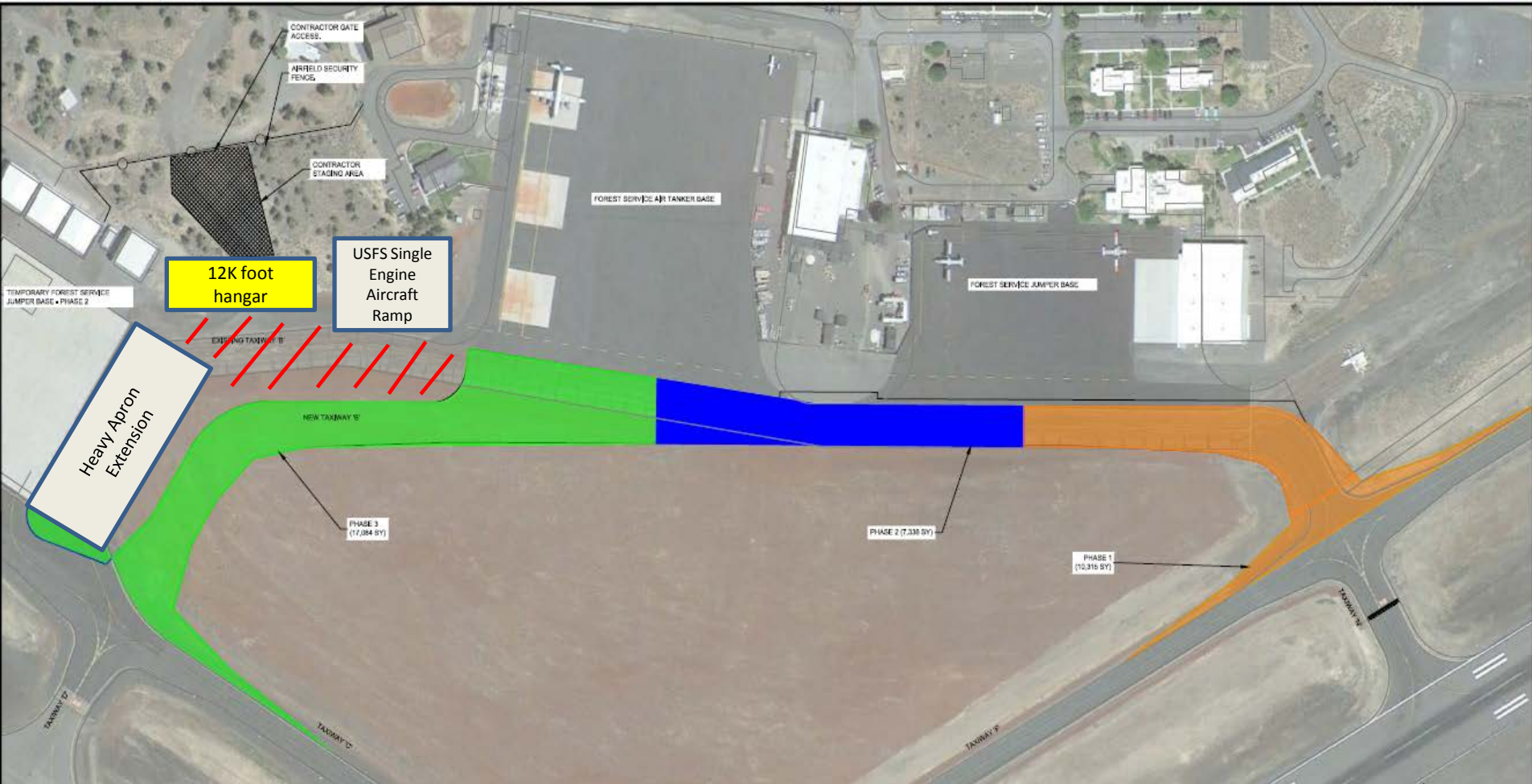
PROJECT FUNDING		
FAA	\$3.89M	93.75%
C.O. VI	\$259K	6.25%
Total	\$4.15M	100%

- Ready to begin in next month
- Minimum 20 year structure life
- Separate Taxiway from GA Apron
- Same Weight load as main runway

TAXIWAY B (Future)

- RDM Identified as Critical FEMA Asset
 - Federal Incident Support Base
- Direct route to GA Ramps & De-conflict traffic hotspots
- Connect FBOs/USFS/Commercial/GA traffic flow throughout Airport
- Will result in 6,791 annual operations – USFS & GA





TAXIWAY B (Future)

ROBERTS FIELD - REDMOND MUNICIPAL AIRPORT (RDM)



Thank you

